

Welcome to
Middle School-Central



School Schedule

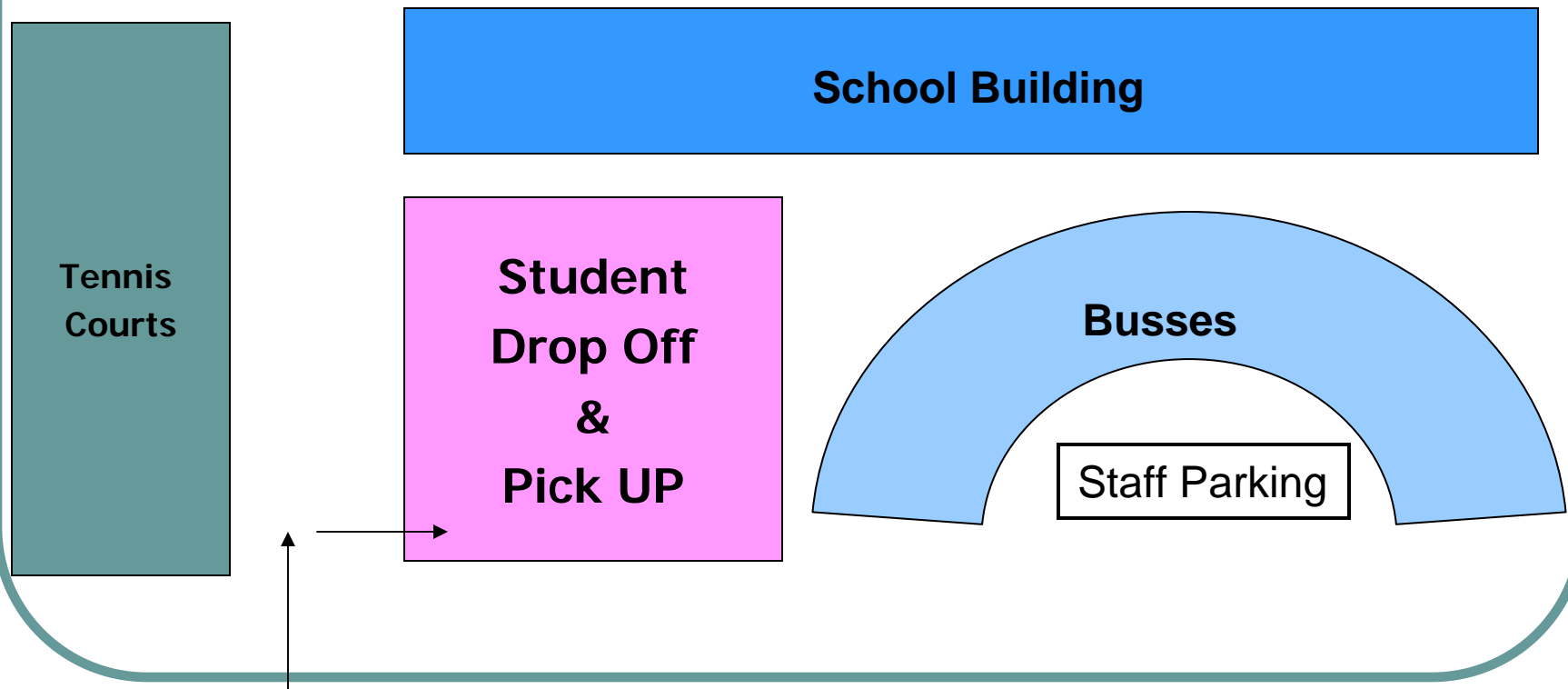
- **Daily schedule M, T, TH, F**
 - 7:50 AM busses arrive
 - 8:00 AM classes begin
 - 3:05 PM school dismissed
- **Daily schedule Wednesdays**
 - 7:50 AM busses arrive
 - 8:00 AM classes begin
 - 2:05 PM school dismissed

Supervision

- School doors open at 7:30 AM.
- 7:30 – 7:50 AM
 - Supervision for students dropped off early
 - Cafeteria
- 3:15 PM All students must be on the bus or picked up, unless at a supervised activity.

Drop Off & Pick Up

- Use parking lot by tennis courts



Absences

- Please call in absences
- Leave a message on voicemail
- Make-up work:
 - Upon return, student consults with teacher
 - ___ days to make up ___ days absent
 - Extended absences: 24 hours for teachers to gather work
 - Vacations – Teachers may not have materials ready



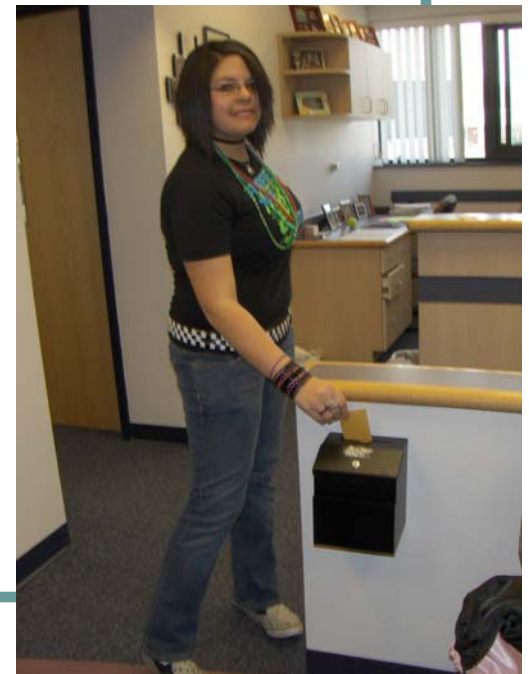
Breakfast

- Get in line after getting off bus or getting dropped off
- Purchase breakfast
 - Eat in cafeteria
 - 7:50 AM Sent to class – can take unfinished breakfast.
 - 8:00 AM Marked tardy.



Lunch

- 3 lines
- Hot or cold lunch
- Cash
- Student ID (debit)
 - Money envelope (counseling office)
 - Monitor account on-line



Sample Schedule

- 7:50 – 8:00 AM Get breakfast / lockers
- 8:00 – 8:05 AM Announcements
- 1st hour Art
- 2nd hour English
- 3rd hour Social Studies
- Lunch
- 4th hour Math
- 5th hour PE/Health
- 6th hour Science
- 6 Plus



Lockers



Elevator



Report Card

L Anse Creuse Middle School Central
38000 Reimold 663575
Harrison Township, MI 48045-55

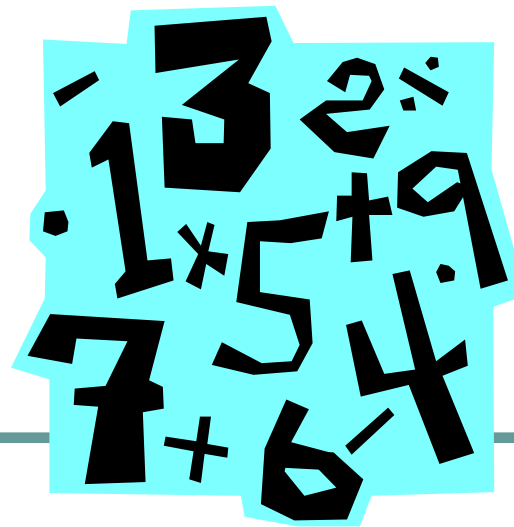
Third Quarter Grades

Course	Teacher	1st Qtr	2nd Qtr	Academic Marks		
				1st Exam	1st Sem	3rd Qtr
PE/Health 8	Nielubowicz	A	A			
3D Art 7/8	Mogielnicki				A	
English 8	Schreck	A	A		A	
Comp Graphics 7/8	York	A				
Career Expl 8	Nelson		A			
Drama 7/8	Ferrazza				A	
Soc Studies 8	Springer	A+	A		A+	
Math 8	Gulecki	A	A		A	
Science 8	Dunn	A	A		A	

Math Reminder!

Memorize your:

- Addition facts
- Multiplication facts



Advanced Math

- To qualify:
 - MEAP score of 1 (exceeds expectations)
 - A (above) on report card in math
 - 80% or above on Inventory Test
 - Teacher recommendation

- Algebra in 8th grade
- 4 more years of math in high school
- Prerequisite for Math & Science Center
- Prerequisite for International Academy of Macomb

Socials

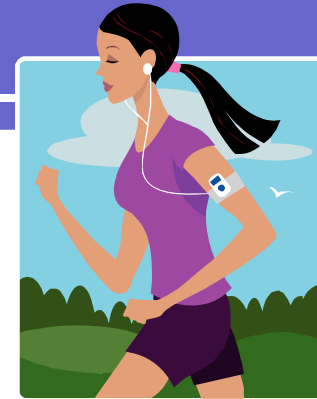


- * Must have good behavior to attend
- * 3 socials per year
- * Right after school – 1 ½ hours
- * DJ, sports, games, food, crafts

After School Activities

- Yearbook Club
- Science Olympiad
- Student Council
- Drama Club
- Lego Club
- Green Club
- Dance Team (Community Ed.)
- Jazz Band (Community Ed.)

Sports



- Gr. 6: Cross Country (fall)
- Intramurals offered before school - 7:00 AM (tennis, volleyball)
- Gr. 7 & 8: Football, Boys' Basketball, Girls' Basketball, Girls' Volleyball, Track, Cross Country

Parent Communication

- It's a new world!
 - Parent E-News - Daily
 - Teacher e-mails
 - Teacher web sites
 - School web site
- Mailed: Parent Newsletters - quarterly
- Sent home with students: Emergency notifications
- Outside group announcements – on district web site



Check Out Our Web Page

- www.lc-ps.org
- Click on Middle School-Central
 - School calendar – updated all year
 - Parent/Student Handbook
 - Teacher web pages
 - Parent resources
 - Curriculum
 - Bell schedule
 - And lots more...

Parent Involvement

- Parent Roundtable
 - Every other month
 - Informal conversations
- Volunteers
 - Socials
 - Fundraisers
 - Lancer Day
 - Picture /Vision Re-screening Day
 - Distribute report cards at conferences
 - Beginning of school packets
 - Field trips
 - Classroom activities/projects



Parent/Teacher Conferences



Medication



- All medication must be administered through the office. This includes aspirin.
- Original containers required. Parent must complete form. Students may not bring the medication to school.
(Exceptions: severe asthma, diabetics...)

Lancer Day!

- August 30, 2010
- 8:00 – 2:30 PM Drop in!
- Pictures taken
- Pick up schedules
- Try your locker
- Find your classes
- Bring in medication/health records
- Pay book deposit (\$40)
- Class supply lists



See you next fall!